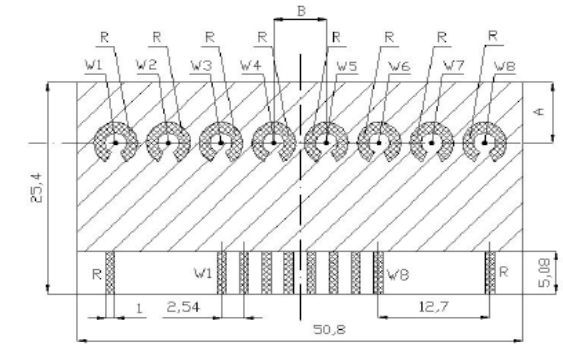
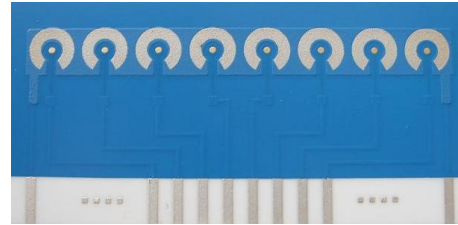


ELECTROCHEMICAL SENSORS

Type: AC5.W*.R*

Description:

The sensor is formed on a corundum ceramic base. On to this surface the working and the reference electrodes are applied. The working electrodes create an array of eight electrodes. The electrodes can be made of variety of materials (see below). At the end of the sensor there is a contacting field which is connected with the active part by the silver conducting paths which are covered by a dielectric protection layer. A bio-chemically active substance is put on the working electrodes of the sensor.



Physical parameters:

Weight: 3 gms
 Length: 25.40 mm
 Width: 50.80 mm
 Thickness: 0.63 mm

A	6.00 ± 0.05 mm
B	5.65 ± 0.05 mm
C	5.65 ± 0.05 mm

Electrode Materials

are defined by: **AC5.W*.R***

The asterisk is replaced by the appropriate number or letter

A - Amperometric sensor or electrode	3 - Pure Silver
C - Corundum ceramic base	4 - Graphite
5 - Sensor group reference number	R - Reference electrode material
W - Working electrode material	S - Silver
S - Alloy of Gold and Platinum	1 - Silver / Silver Chloride
1 - Pure Gold	2 - Silver covered by AgCl
2 - Pure Platinum	

Sensor Usage:

This specific range of AC5 sensors enables the measurement of:

- Electrochemical immunoassay

Evaluating Units:

- BA3.*

Connector Types for AC5 Sensor Range

- KA5

Ordering information:

- The order is specified by whole sensor description formula
- Minimum order quantity - 5 sensors
- All order quantities are to be in multiples of 5 e.g. 5, 10, 15, etc.
- Delivery time for standard AC5 sensors is 4 weeks from receipt of order
- Delivery time for non-standard AC5 depends on final technical specification

Example of Order:

- 100 pieces - AC5.W2.R1

The explicit list of materials used for electrode preparation

Type of Sensor	Electrode Material		Conducting Paths
	Working W ₁ - W ₈	Reference	
AC5.WS.RS	PtAu (15 / 85%)	AgPd (98 / 2%)	Ag
AC5.WS.R1	PtAu (15 / 85%)	Ag / AgCl (60 / 40%)	Ag
AC5.WS.R2	PtAu (15 / 85%)	Chlorinated Silver	Ag
AC5.W1.RS	AuPd (98 / 2%)	AgPd (98 / 2%)	Ag
AC5.W1.R1	AuPd (98 / 2%)	Ag / AgCl (60 / 40%)	Ag
AC5.W1.R2	AuPd (98 / 2%)	Chlorinated Silver	Ag
AC5.W2.RS	Pt (100%)	AgPd (98 / 2%)	Ag
AC5.W2.R1	Pt (100%)	Ag / AgCl (60 / 40%)	Ag
AC5.W2.R2	Pt (100%)	Chlorinated Silver	Ag
AC5.W3.RS	AgPd (98 / 2%)	AgPd (98 / 2%)	Ag
AC5.W3.R1	AgPd (98 / 2%)	Ag / AgCl (60 / 40%)	Ag
AC5.W3.R2	AgPd (98 / 2%)	Chlorinated Silver	Ag
AC5.W4.RS	C (7101)	AgPd (98 / 2%)	Ag
AC5.W4.R1	C (7101)	Ag / AgCl (60 / 40%)	Ag
AC5.W4.R2	C (7101)	Chlorinated Silver	Ag