

## FLOW CELL

Type: FC2.\*

### Description:

The flow cell enables the use of AC1, AP1, CC1 sensor in a flow through arrangement. The sensor is inserted into the slit of cell and tightened by closing of the door. The cell ensures the wall-jet flow around the working electrode and it is optimised so that no air bubbles cumulate in the cell. The cell contains also the contact and output cable.

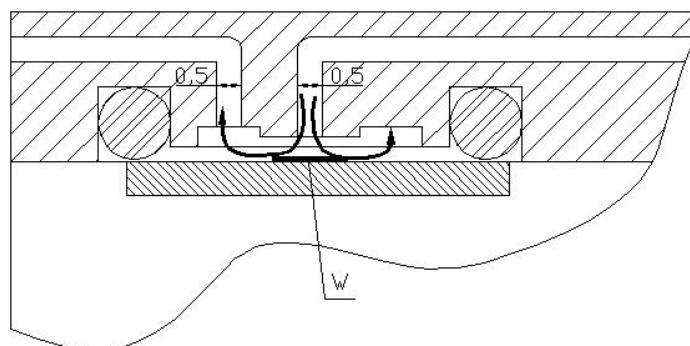


### Physical Parameters:

#### Dimensions:

Weight: 11 gms  
 Length: 42 mm  
 Width: 24 mm  
 Thickness: 16 mm

### Flow Arrangement



### Cell Material:

- Polymethylmetacrylate

### Experimental Accessories:

- Peristaltic Pump
- Linear Pump

### Software Packs

- Basic evaluation (BA1.S)
- Measurement of organophosphorous compounds toxicity (BA1.1)

### Evaluating Units

- BA1.\* (FC2.2)
- Any device (FC2.S; FC2.1)
- Palmsens - Palminstruments (FC2.3) - [www.palmsens.com](http://www.palmsens.com)
- eDAQ (FC2.4) - [www.edaq.com](http://www.edaq.com)

### Cell Usage:

- Flow measurement
- Flow-injection analysis

### Example of Order

- 5 pieces - KA1.S

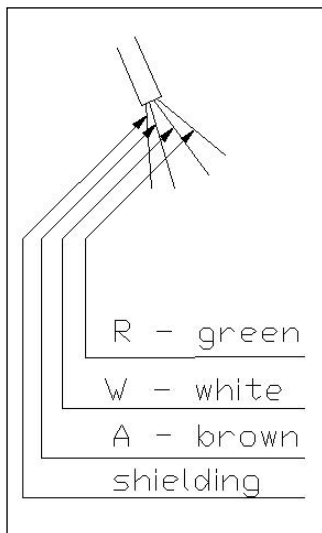
### Ordering Information

- The order is specified by whole product code
- Minimum order quantity - 1 cell
- Delivery time for standard FC2 cell is 4 weeks from receipt of order
- Delivery time for non-standard FC2 cell depends on final technical specification of order

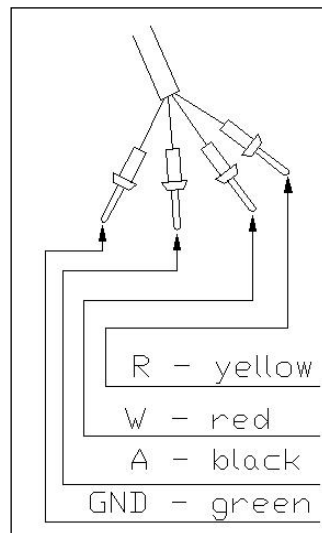
### Types of Termination

Model	Cable	Termination
FC2.S	Three core Shielded cable	Single conductors
FC2.1	Three core Shielded cable	Banana plugs
FC2.2	Three core Shielded cable	7 poles BVT connector
FC2.3	Three core Shielded cable	Triad01 PalmInstruments
FC2.4	Three core Shielded cable	BNC connectors

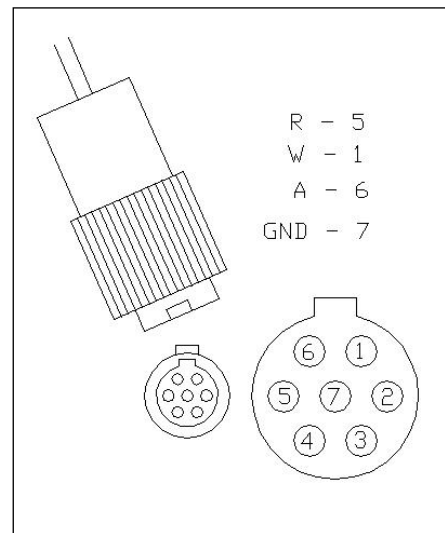
### Standard Ends of Cables



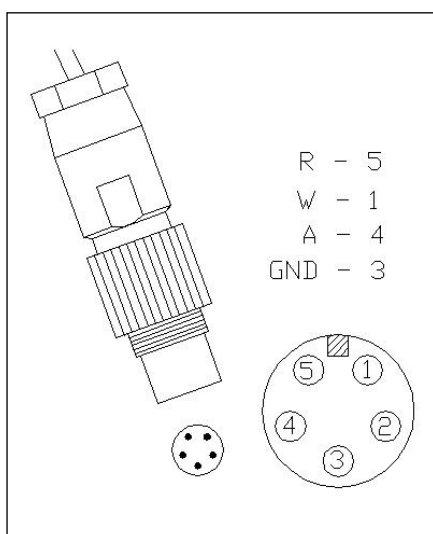
FC2.S



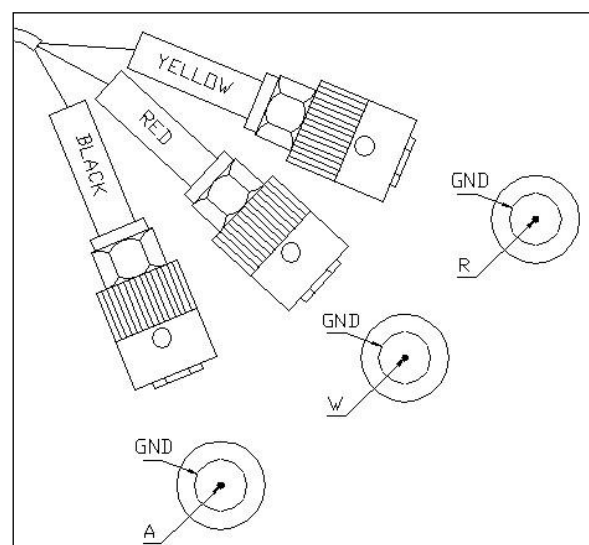
FC2.1



FC2.2

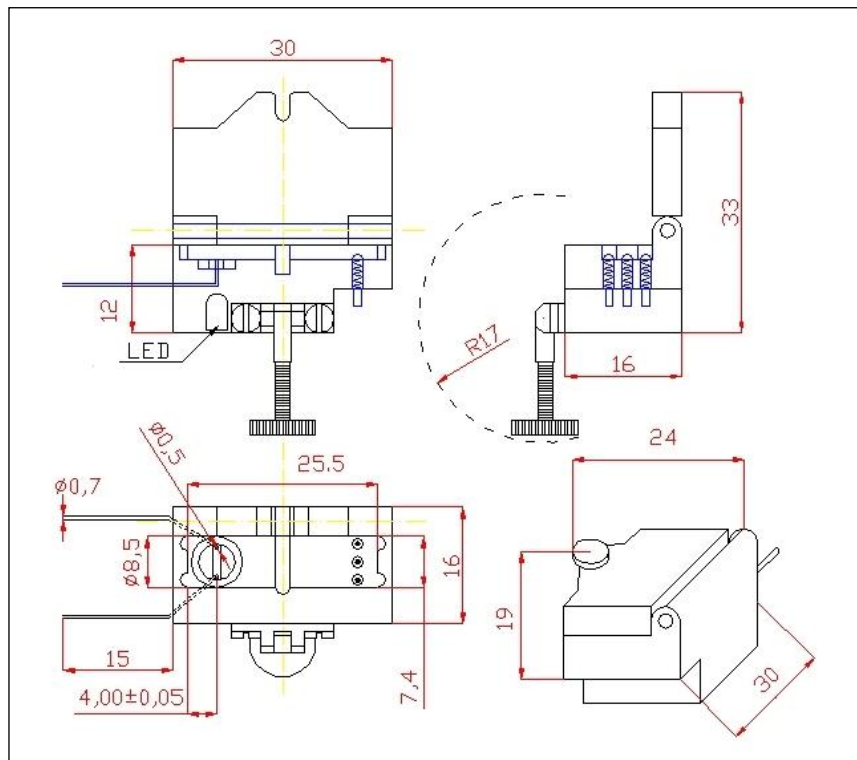
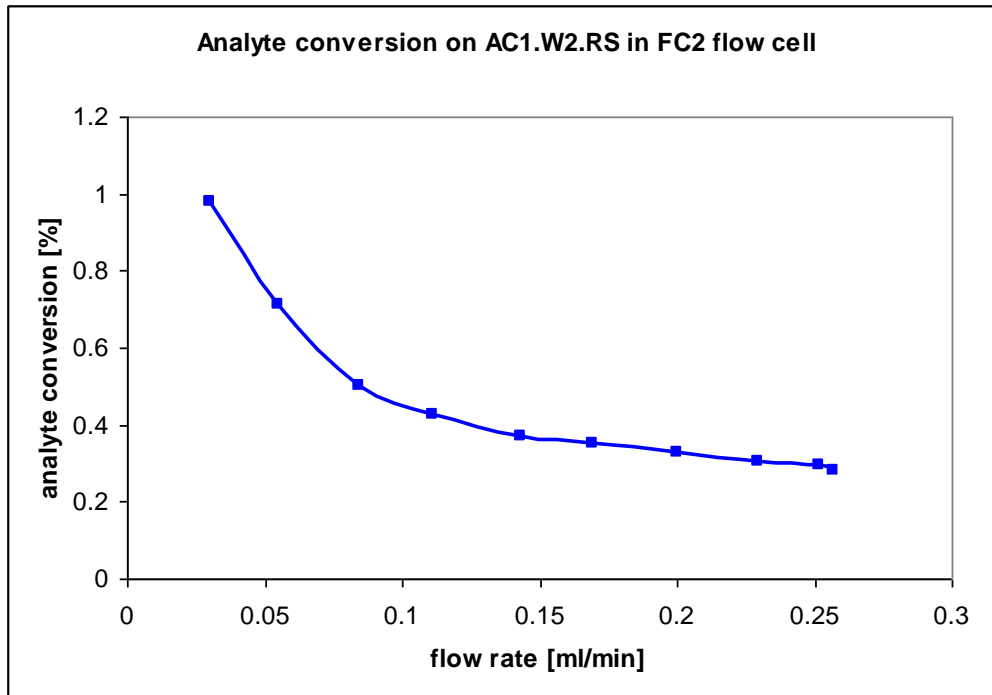


FC2.3



FC2.4

**Analyte conversion on AC1 electrochemical sensor using FC2 cell at different flow rates**



**Warnings**

The parts of device which are in contact with analyzed solutions are made from PMMA - polymethylmethacrylate. Some solution components can damage the device. Following solutions were proved to damage it:

- Organic solvents
- Solutions of HCl with tetraethyl orthosilicate causes induced creep of PMMA and metal parts corrosion.