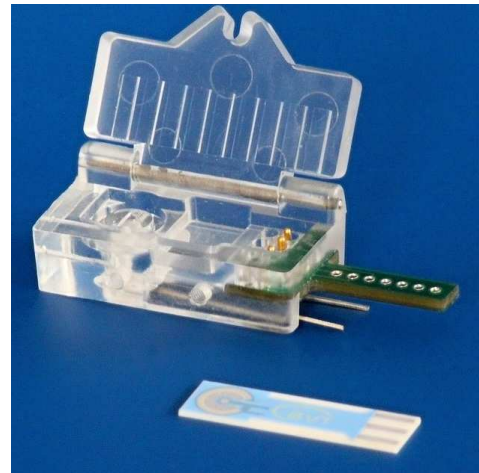


## FLOW CELL

Type: FC2.\*

### Description

The flow cell enables the use of AC1, AP1, CC1 sensor in a flow through arrangement. The sensor is inserted into the slit of cell and tightened by closing of the door. The cell ensures the wall-jet flow around the working electrode and it is optimised so that no air bubbles cumulate in the cell. The cell contains also the contact and output cable.



### Physical Parameters

Dimensions:

Weight: 11 gms  
Length: 42 mm  
Width: 24 mm  
Thickness: 16 mm

### Cell Material

- Polymethylmetacrylate

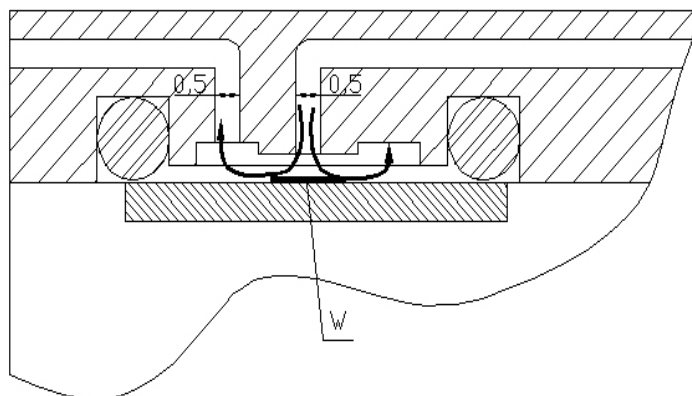
### Experimental Accessories

- Peristaltic Pump
- Linear Pump

### Cell Usage

- Flow measurement
- Flow-injection analysis

### Flow Arrangement



### Example of Order

- 5 pieces - FC2.1

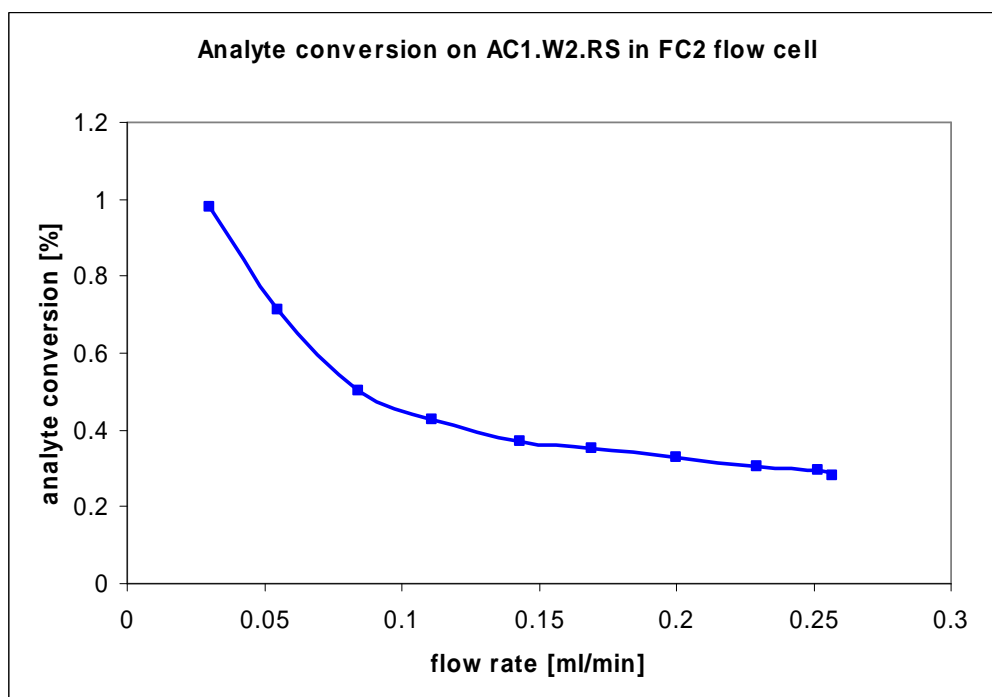
### Ordering Information

- The order is specified by whole product code
- Minimum order quantity - 1 cell
- Delivery time for standard FC2 cell is 4 weeks from receipt of order
- Delivery time for non-standard FC2 cell depends on final technical specification of order

## Types of Termination

Model	Cable	Termination	Evaluating Units
FC2.5	Three core Shielded cable	Single conductors	any device
FC2.1	Three core Shielded cable	Banana plugs	any device
FC2.2	Three core Shielded cable	7 poles BVT connector	any device
FC2.3	Three core Shielded cable	Triad01 Palminstruments	Palmsens - Palminstruments
FC2.4	Three core Shielded cable	BNC connectors	eDAQ
FC2.5	Three core Shielded cable	Small banana plugs	any device

## Analyte conversion on AC1 electrochemical sensor using FC2 cell at different flow rates



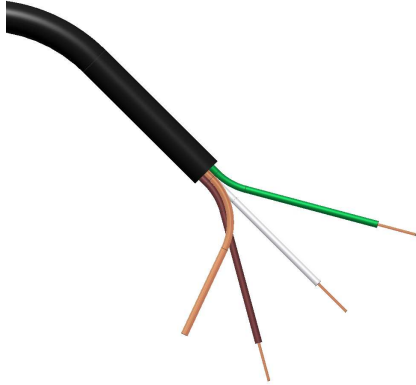
## Warnings

The parts of device which are in contact with analyzed solutions are made from PMMA - polymethylmethacrylate. Some solution components can damage the device. Following solutions were proved to damage it:

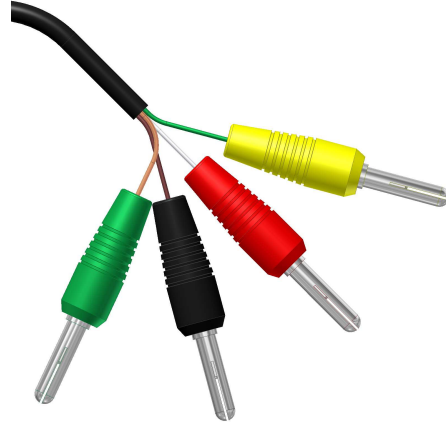
- Organic solvents
- Solutions of HCl with tetraethyl orthosilicate causes induced creep of PMMA and metal parts corrosion.

**Internal Wiring**

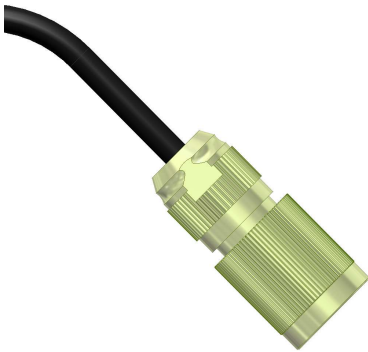
FC2.S



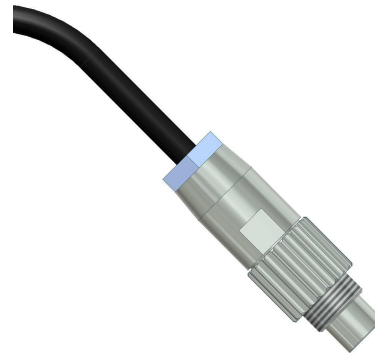
FC2.1



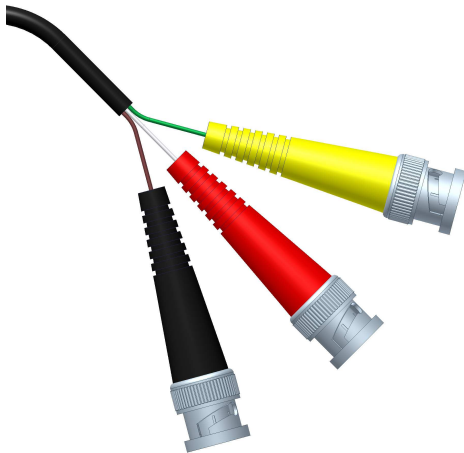
FC2.2



FC2.3



FC2.4



FC2.5

