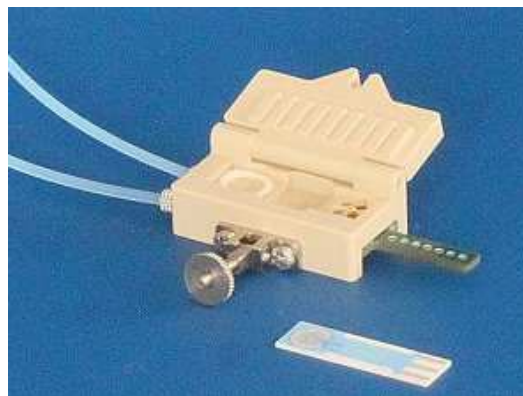


FLOW CELL

Typ: FC4.*

Description

The FC4.* flow cell is made of PEEK. It has teflon endings permitting a fully compatible connection to chromatography tubing. The flow cell enables the use of AC1, AP1, and CC1 sensor in a flow-through arrangement. The sensor is inserted into the cell compartment (face downward), the lid is closed and tightened by the screw. The wall-jet flow around the working electrode and is optimized to avoid bubbles. The cell contains also the contact and output cable.



Physical Parameters

Dimensions:

Weight: 11 gms
Length: 42 mm
Width: 24 mm
Thickness: 16 mm

Cell Materials

- Polyether ether ketone (PEEK)

Experimental Accessories

- Peristaltic Pump
- Linear Pump

Cell Usage

- Flow measurement-
- Flow-injection analysis
- Detection of herbicides

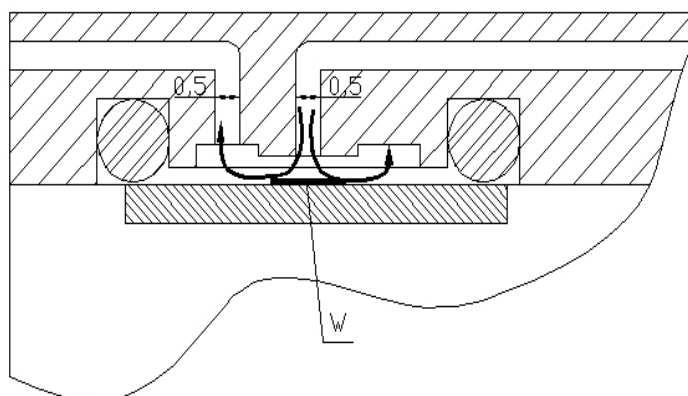
Ordering Information

- The order is specified by whole product code.
- Minimum order quantity - 1 cell.
- Delivery time for standard FC4.* cell is 6 weeks from receipt of order
- Delivery time for non-standard FC4.* cell depends on final technical specification of order.

Example of Order

Datasheet: FC4.*

Flow Arrangement



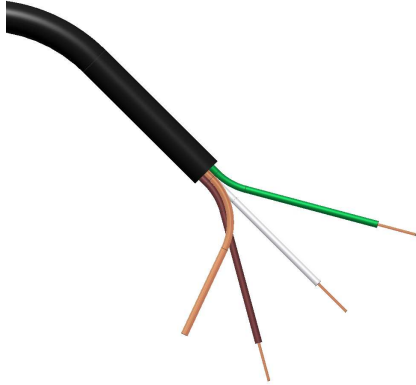
- 5 pieces - FC4.3

Types of Termination

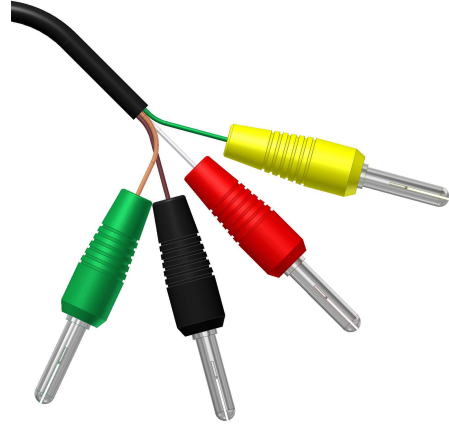
Model	Cable	Termination	Evaluating Units
FC4.S	Three core Shielded cable	Single conductors	any device
FC4.1	Three core Shielded cable	Banana plugs	any device
FC4.2	Three core Shielded cable	7 poles BVT connector	any device
FC4.3	Three core Shielded cable	Triad01 Palminstruments	Palmsens - Palminstruments
FC4.4	Three core Shielded cable	BNC connectors	eDAQ
FC4.5	Three core Shielded cable	Small banana plugs	any device

Internal Wiring

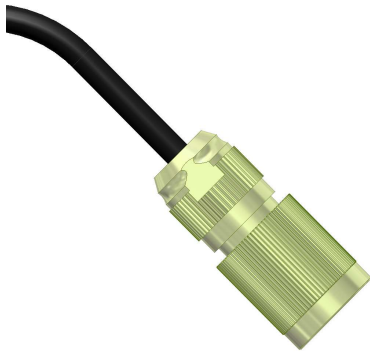
FC4.S



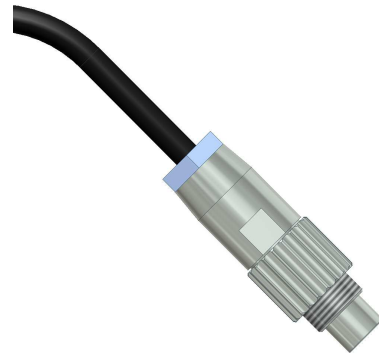
FC4.1



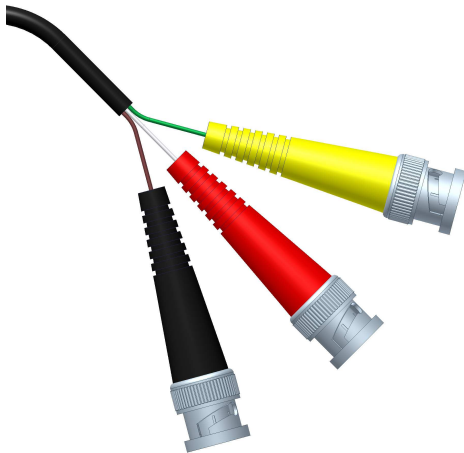
FC4.2



FC4.3



FC4.4



FC4.5

